

Merimage - Plate-forme de microscopie optique et électronique

*Optics and electronic microscopy core
facility*



Roscoff (29)

www.biogenouest.org/merimage

ACCES . Access

La plate-forme est accessible aux unités de recherche académique et aux entreprises.

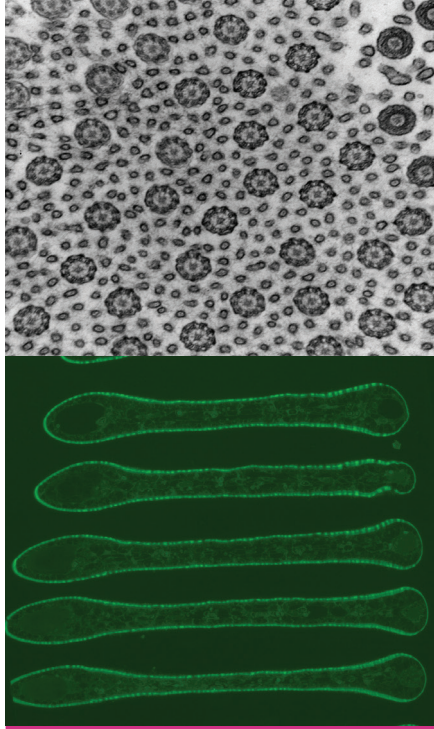
The platform is accessible to academic research units and companies.

Ian PROBERT

Responsable scientifique . *Manager*
probert@sb-roscoff.fr
+33 (0)2 98 29 23 34

Sophie LE PANSE

Responsable technique . *Technical Manager*
lepanse@sb-roscoff.fr
+33 (0)2 98 29 23 70



MOTS CLEFS . Keywords

microscope optique et électronique / cryométhodes / immunohistochimie / étude ultrastructurale / coloration négative / dynamique cellulaire / séparation spectrale

optical microscopy / electronic microscopy / immunohistochemistry / ultrastructural study / negative staining / cellular dynamic / dye separation spectral

OFFRE . Offer

La plate-forme Merimage propose de développer des prestations permettant l'analyse ultrastructurale, la visualisation, les interactions et les fonctions des échantillons biologiques. La plate-forme réunit des ressources en microscopie en transmission, à balayage et la fluorescence.

The facility focuses on two activities:

- *Electron microscopy: for ultrastructural analysis of the cell and its components. It includes the transmission and scanning electron microscopy and the preparation of samples*
- *Optical microscopy: for the visualization and analysis of structure and dynamic processes at the cellular level.*